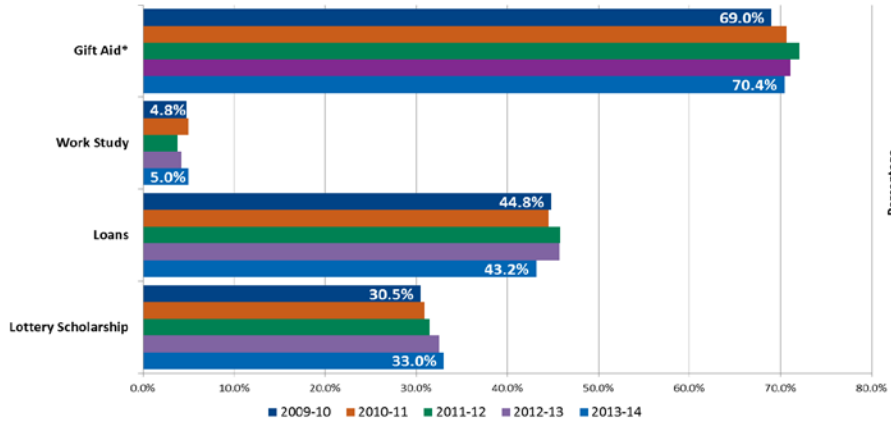


NMSU Data Snippets

Tuesday, November 11, 2014

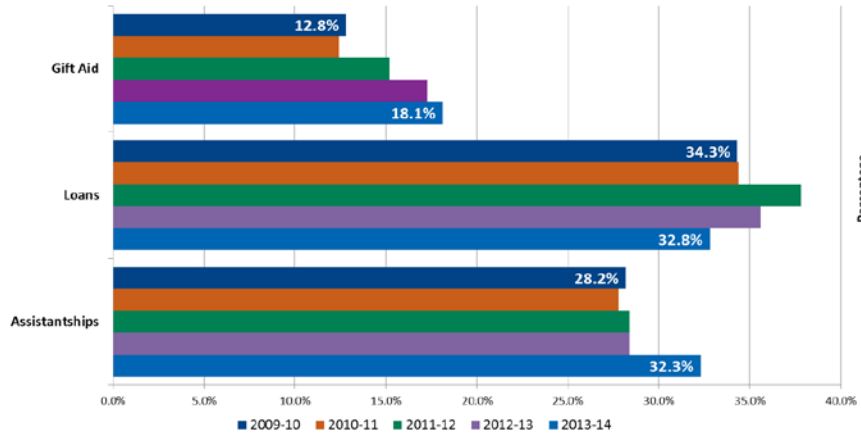
Financial Aid

Percentage of Undergraduate Students Receiving Financial Aid, by Type of Aid
2009-10 to 2013-14
NMSU-Las Cruces



*Gift aid includes the Lottery Scholarship.

Percentage of Graduate Students Receiving Financial Aid, by Type of Aid
2009-10 to 2013-14
NMSU-Las Cruces



Cost of Attendance for In-State, Full-Time, Undergraduate Students, 2013-14
NMSU-Las Cruces



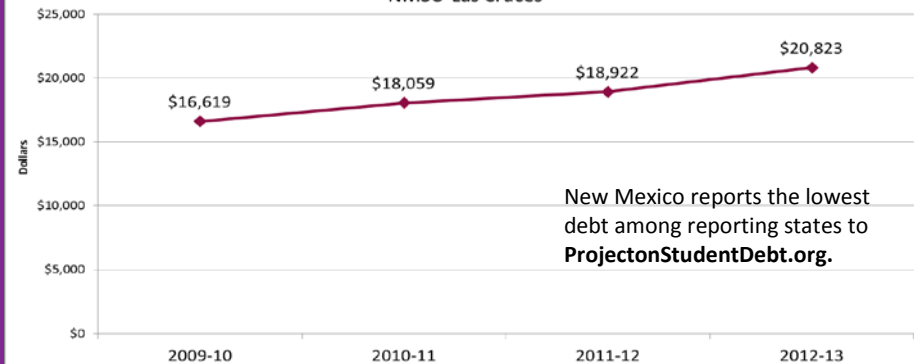
Tuition & Fees	Books & Supplies	Room & Board	Other Expenses
\$6,220	\$1,084	\$7,735	\$3,216

Paying the Cost of Attendance – In-State, Full-Time, Undergraduate Students, 2013-14



Gift Aid	Self-Help	Lottery Scholarship	Out-of-Pocket
22%	18%	12%	48%

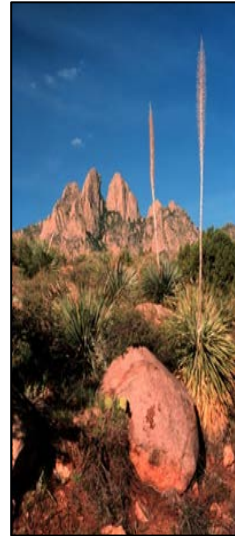
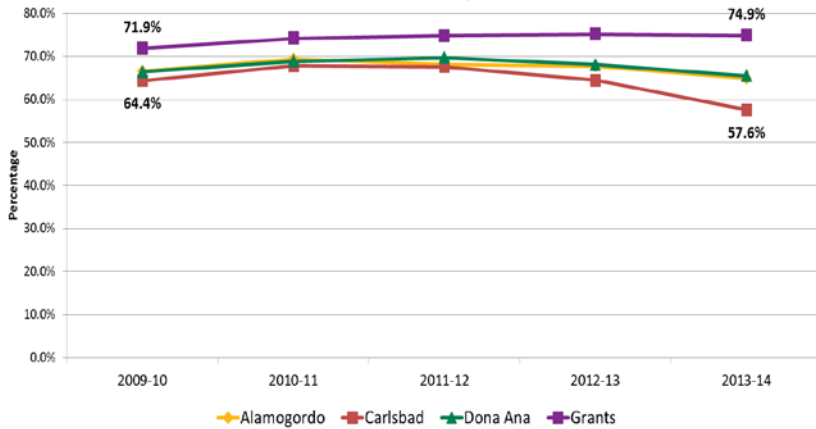
Average Amount of Undergraduate Debt at Graduation
2009-10 to 2012-13
NMSU-Las Cruces



New Mexico reports the lowest debt among reporting states to ProjectionStudentDebt.org.

Financial Aid

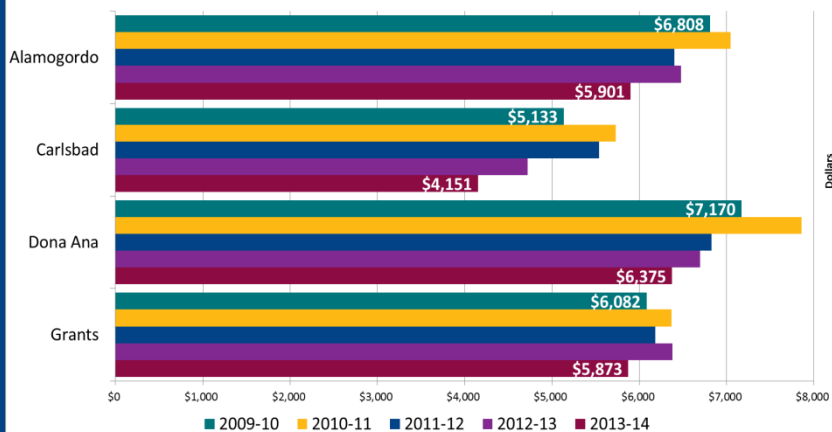
Percentage of Students Receiving Financial Aid
2009-10 to 2013-14
NMSU Branch Campuses



Percentage of Students Receiving Financial Aid, by Type of Aid
2013-14
NMSU Branch Campuses



Average Award per Recipient
2009-10 to 2013-14
NMSU Branch Campuses



Percentage of Students Receiving Lottery Scholarship and Pell Grant
2013-14
NMSU Branch Campuses

