

NMSU Data Snippets

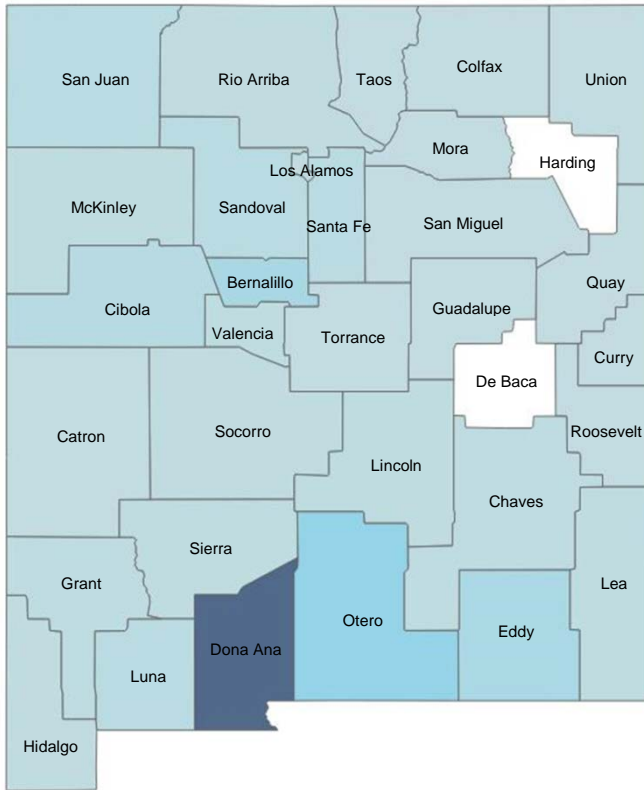
Tuesday, May 12, 2015

Graduating Students

Residency of Graduating Students by New Mexico County, Spring 2015

NMSU-Las Cruces

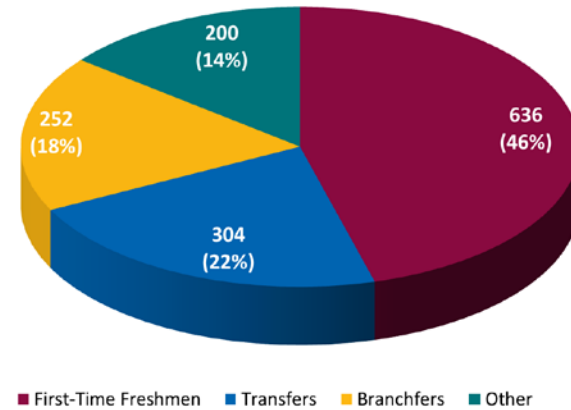
| | |
|-------------------|-------|
| Bernalillo County | 114 |
| Catron County | 4 |
| Chaves County | 24 |
| Cibola County | 55 |
| Colfax County | 6 |
| Curry County | 5 |
| Dona Ana County | 1,188 |
| Eddy County | 112 |
| Grant County | 24 |
| Guadalupe County | 1 |
| Hidalgo County | 11 |
| Lea County | 17 |
| Lincoln County | 19 |
| Los Alamos County | 19 |
| Luna County | 35 |
| McKinley County | 19 |
| Mora County | 1 |
| Otero County | 199 |
| Quay County | 2 |
| Rio Arriba County | 13 |
| Roosevelt County | 7 |
| San Juan County | 38 |
| San Miguel County | 6 |
| Sandoval County | 38 |
| Santa Fe County | 34 |
| Sierra County | 19 |
| Socorro County | 9 |
| Taos County | 7 |
| Torrance County | 6 |
| Union County | 4 |
| Valencia County | 20 |



| Region | N | % |
|---------------|-------|-----|
| NM In-State | 2,056 | 71% |
| Texas | 249 | 9% |
| Other U.S. | 390 | 13% |
| International | 215 | 7% |

Entering Enrollment Status of Undergraduate Graduating Class, Spring 2015

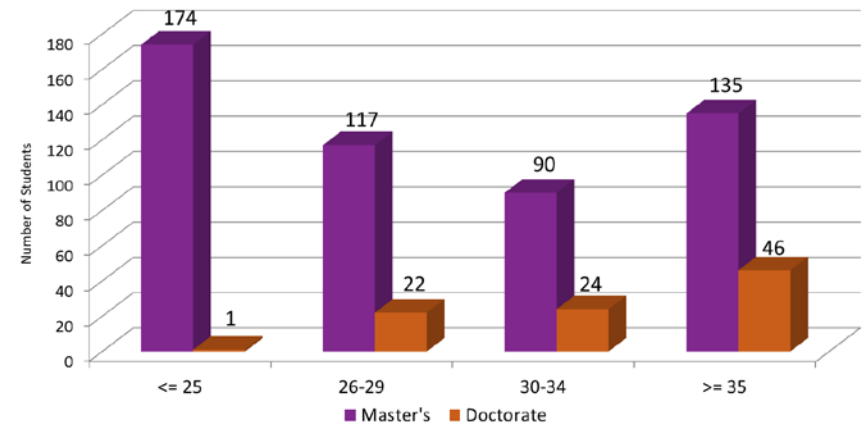
NMSU-Las Cruces



Transfers = Outside NMSU; Branchfers = Transfer from within NMSU; Other = May have entered as non-degree or long-term student

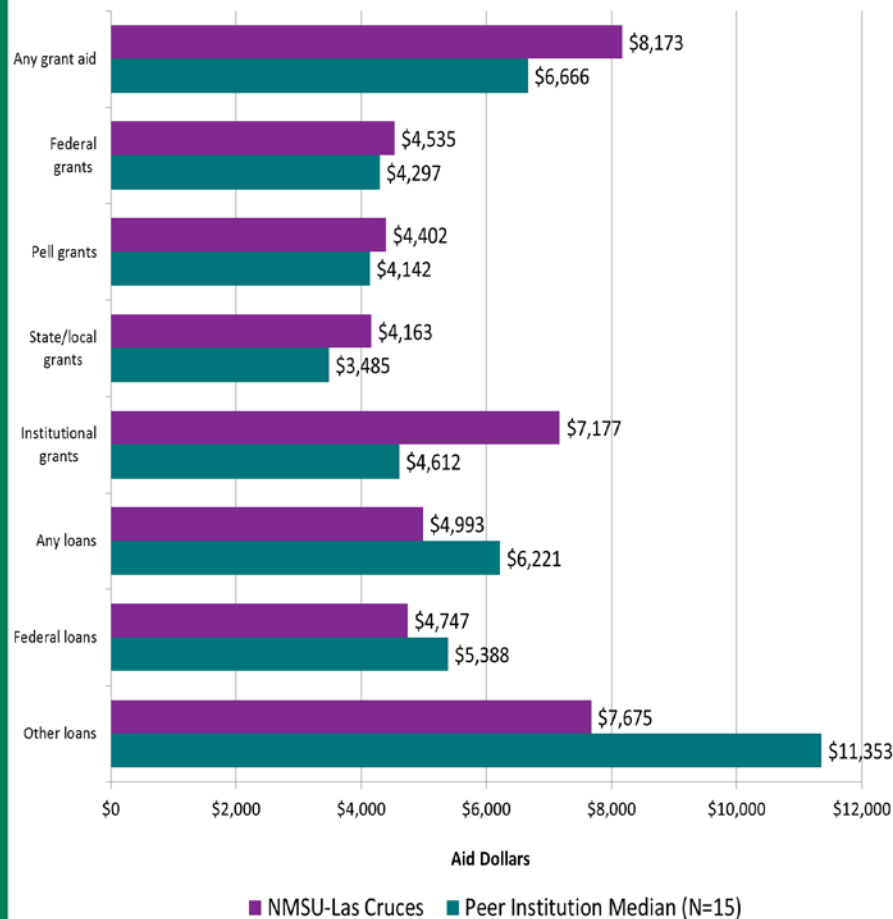
Age of Graduating Class (Graduate) by Degree Level, Spring 2015

NMSU-Las Cruces

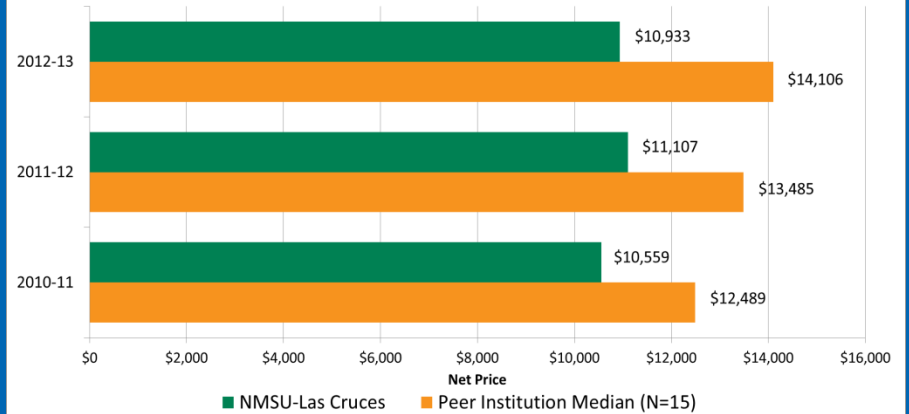


Financial Aid

Average Amounts of Grant/Scholarship Aid Received by Full-Time, First-Time, Degree-Seeking Undergraduate Students by Type of Aid, 2012-13
NMSU-Las Cruces and Peer Institutions



Average Net Price of Attendance for Full-Time, First-Time Degree-Seeking Undergraduate Students Receiving Grants or Scholarship Aid, 2010-11 to 2012-13
NMSU-Las Cruces and Peer Institutions



Average Total Indebtedness of 2012-13 Graduating Class
NMSU-Las Cruces and Peer Institutions

